



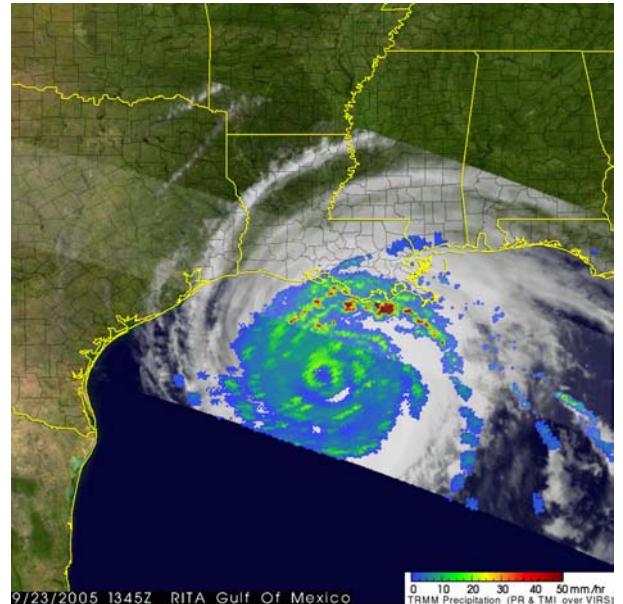
# CLC NEWS

## Hurricane and Volcano Pose Dangerous Threat to Island

There are some hurricane safety rules that you need to know:

- Keep watching the TV for more updates
- Try to boil all water before drinking it
- Make sure you drink from a reliable source
- Wild animals may hide in unusual places **ESPECIALLY SNAKES**

The emergency response team have started to evacuate Plymouth by ferry, which has been surrounded by the ash cloud and people are starting to have breathing difficulties. The ash is so low to the ground that if these places aren't evacuated soon then there will be many casualties. This is also happening in Streatham.



There is a problem with the satellites because the ash is clouding the pictures. The satellite team are contemplating changing the satellites from earth ones to geostationary ones because these are higher up and will get a clearer picture. The hurricane is due to hit the island in about 13 hours

